

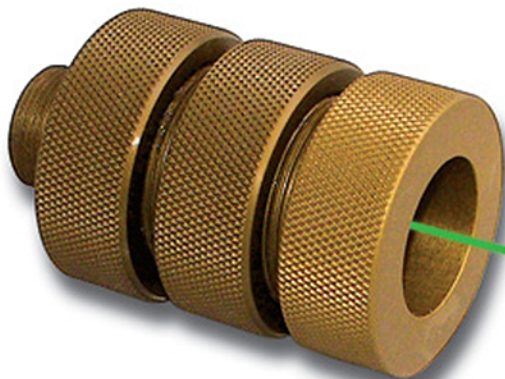
LASER

TOOLS CO., INC.

CALL TOLL FREE TO ORDER NOW!

1.800.598.5973

NEW



WP59 Fine Beam Steering Optics, Fits 3/4" - 24 Threads

- Precisely positions laser beam within a $\pm 10^\circ$ range of adjustment
- Adjusts beam to be concentric to O.D. of laser tube
- Moves laser beam to point of reference without moving mounting bracket

WP58 Fine Beam Steering Optics, Fits 9/16"-32 Threads.



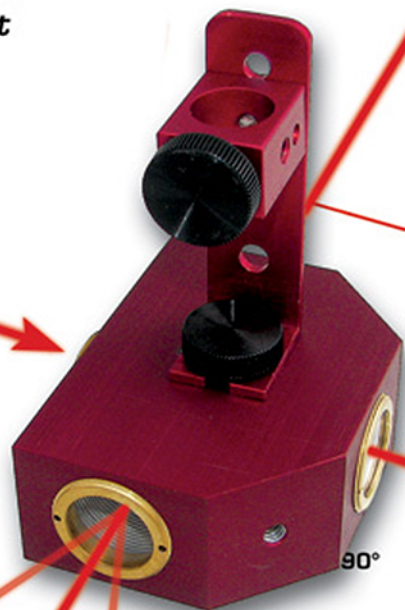
Simple Operation
"Rotate for Beam Adjustment"
 $\pm 2^\circ$ Range of Adjustment

*"Uses Wedge Prisms which are impervious
to shock by dropping or harsh usage"*

AP935 Tri-Beam Prism System

- Splits the laser beam into three directions for precise layouts
- Used for 90° Header and Break alignments
- Can be positioned anywhere along the beam's path for fixed 90° turns and adjustable turns from 75° to 105°
- Includes: AP93 Tri-Beam Bender™, AP94 Mounting Bracket and hardware for Rib or Roof support and 2-3/4"-10 Rock Bolts with 2 Anchors

NEW



CALL TOLL FREE FOR MORE INFORMATION AND TO ORDER NOW!

1.800.598.5973



APPROVED!



Manufactured by: Laser Tools Co., Inc., 12101 Arch St., Little Rock, AR 72206 TEL: 501-562-0900 FAX: 501-562-0022
Web Site: <https://www.lasertoolsco.com> E-mail: lasertoolsco@lasertoolsco.com Copyright February 2010